

ThakehamHomes.co.uk

ThakehamHomes
Creating homes for a finer lifestyle



Buckleys Orchard Steypning

PRICE
£735,000



One of a pair of executive detached houses situated in a private drive in one of Steypning's most fashionable roads, finished to the highest of standards with luxury modern fittings.

We have created something very special with the quality of build and finish synonymous to us and finished to the popular Sussex style. This house gives you all the space needed for every day life with the luxury and gadgets associated with a prestigious home.

There are oak floors and staircases, slate flooring to the kitchen/diner plus extensive fitted units under Corian work surfaces and soft closing doors hiding all the essential appliances. There is a traditional fireplace in the sitting room, oak internal doors with stylish contemporary fittings and under floor heating on the ground floor.

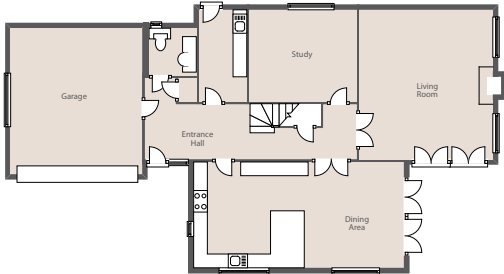
All the ceramic sanitary fittings are Villeroy and Boch. We have created equality in the master bedroom with 'His and Hers' separate walk-in dressing rooms so he can have as many shirts and trousers as she has dresses and shoes. The top floor is ideally suited as an annexe or au pair suite with a generous living room, an ideal study area, double bedroom and fully fitted bathroom/shower room.

The property is built with the security of the NHBC certificate for peace of mind. The level gardens are landscaped for ease of maintenance and can be enjoyed from the house via the fold-back doors in both the sitting room and kitchen/diner.

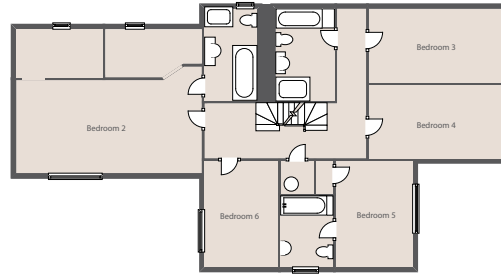


Buckleys Orchard

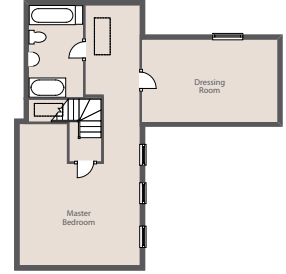
A luxury five-bedroom detached house, situated in a desirable location and fitted to an exceptional standard.



Ground Floor



First Floor



Second Floor

Specification

Kitchen

- Fully fitted contemporary kitchen.
- Integrated oven hob and extractor.
- Integrated fridge/freezer.
- Integrated dishwasher.
- Integrated washer/dryer.
- All integrated appliances are Siemens.
- Stainless steel splash-back behind hob.
- Corian worktop with complementing 150mm upstand.
- Under-unit lighting.

Bathroom and En-suite

- Contemporary Villeroy & Boch white suite.

- Complementing chrome taps and shower fittings.
- Travertine stone tiling.
- Tiled splash-back behind wash-hand basin.
- Full-height tiling to bath and shower.
- Automated electronic extractor fan.
- Villeroy & Boch mirrors with light shaver points.

External Features

- Rear garden has Indian stone terrace.
- Fully laid to lawn.
- Integral double garage with double width driveway.
- Landscaped front garden with post and rail fence and mature Beech tree.

Comfort and Security

- Gas-fired central heating to radiators.
- Wired for Sky+ and BT.
- Prewired for intruder alarm.
- Mains-wired smoke detectors.

Thakeham-Eco Features

- Double-glazed windows.
- Use of A-rated white goods and appliances.



Directions

Heading southbound on the A24, turn left at the Washington roundabout onto the A283. Turn right into Horsham Road, Steyning and follow this road until it becomes the High Street. It then becomes Bramber Road at which point turn left into Goring Road and the site can be found on the right hand side.

SAT NAV: BN44 3GF

ThakehamHomes

Creating homes for a finer lifestyle



01403 787 950

enquiries@thakehamhomes.co.uk
thakehamhomes.co.uk

VIEWING: Strictly by appointment through the agents above.

Agent's Note: This development consists of different property styles and the photographs and floor plans shown are for general guidance only. All the floor plans and the room sizes shown have been taken from plans prior to construction and their accuracy cannot be confirmed. This brochure and the information contained within does not constitute or form part of an offer or contract nor may they be regarded as representations. All interested parties must themselves verify their accuracy.

